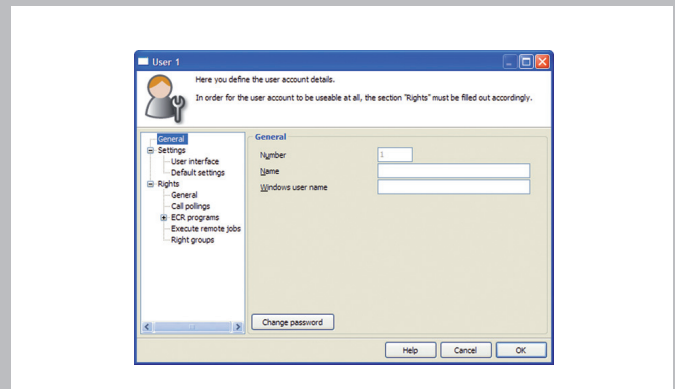
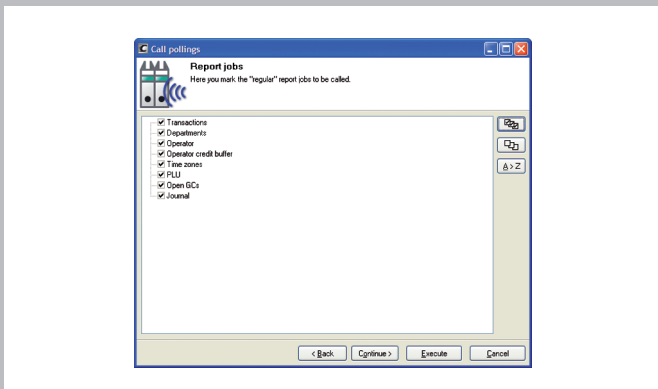
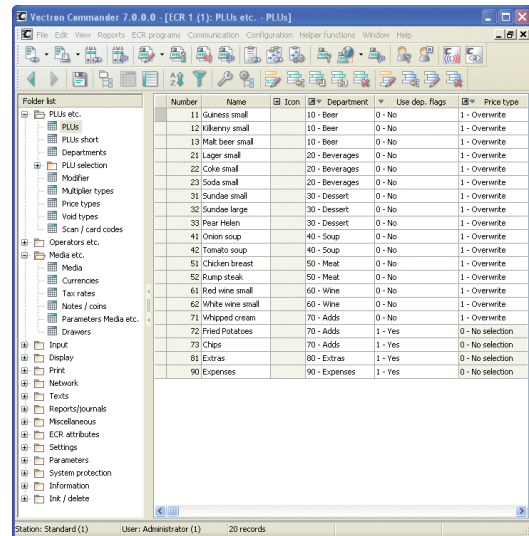


Leading in POS Technology
... since 1990

Vectron Commander 7

Intelligently networked

The Vectron Commander is the central communication software for all Vectron POS systems. It connects the head office of a company to all branch shops and serves for simplified data management, automated data transfer and data evaluation. It offers comprehensive information with a minimum of effort. For the first time, the complete programming and configuration of the connected Vectron POS systems can be effected via Commander 7. Useful assistants for e.g. button-, layout- or table plan design facilitate the programming of the POS systems. The new layout of the GUI and the improved user guidance make the handling of Vectron Commander even clearer, more intuitive and easier.



Product highlights

- Complete programming and configuration of connected Vectron POS systems
- Easy programming via assistants
- Centralised base data administration
- Report generator and automatic report printing
- Intuitive, clear user interface
- Processing of decentralised order- and working hour data
- Security through individual access rights
- Safe cash register backup and remote maintenance
- Communication via PC networks or telephone connections

Programming and configuration of POS systems

Vectron Commander 7 allows the complete programming and configuration of the connected Vectron POS systems. Newly introduced assistants for e.g. button-, layout- or table plan design facilitate the programming of the POS systems.

Report generator

Vectron Commander 7 registers the sales data of all POS systems individually; these form the basis for comprehensive analysis and reporting. Numerous report templates are provided; individual reports can be generated. It is possible to link external data to report data of the POS system to generate new report models. Sales- and discount analyses are but two examples of the numerous options.

Graphical evaluations

Via an interface to Microsoft Excel 2007 the POS data is processed to clear tables and clear diagrams. Those can be further processed at your convenience.

Automatic data polling and transfer

Data polling, PLU- and price changes are in most cases carried out after business hours. The communication module of Vectron Commander 7 can call data from or transfer data to several POS systems simultaneously. Communication jobs can be pre-programmed, for instance to call sales automatically at a defined time.

Order administration

For a more efficient order administration, Vectron Commander 7 transfers optimised suggestion lists, which at the POS systems in the branches are either simply accepted or adjusted in detail if required. This saves time and reduces errors. Furthermore, the Vectron Commander 7 imports orders that are entered individually to the POS system.

Time and attendance

Vectron Commander 7 accepts the working hours booked at the cash registers. Along with an initial basic evaluation, it allows connection to work-time programs. That means even people who sign on and off in different outlets are registered.

Security and access control

The access rights for various program sections in Vectron Commander are individually allocated. For example, those who are permitted to change PLU prices do not necessarily have access to turnover evaluations.

Flexible connections

With Vectron Commander 7, Vectron POS systems can be accessed practically worldwide. Along with analogue and ISDN connections, Vectron Commander 7 also supports mobile communication. Onsite cash registers are connected through a serial cable. Alternatively, they use existing Ethernet structures together with a PC network.

Scalable

The optional multi-station capability enables network application of Vectron Commander 7. Multiline-licences allow using several connections - modems, ISDN channels or network connection - for parallel communication with numerous POS systems.

Back Office connection

Via an open interface, Vectron Commander 7 interacts with Back Office programs. Along with turnover and PLU base data, keyboard layouts, operator functions, PLU info texts, macros etc. can also be imported and exported. Please ask your dealer about interfaces to your specific software solutions.